

Rigid Steel Compression Coupling

Size Range: 1/2" - 4"

Product Series: NT Rigid / IMC Compression Coupling

Material: Solid Alloy Steel Construction

Made in the USA

Features:

Precision Machined Cut Threads

AMFICO EZ **Torque** Solid Steel Compression Nuts

Easily Torques Tight and Right

Zinc Plated with a Chromate Finish **

UL Rated Concrete Tight

Suitable for Direct Burial ***

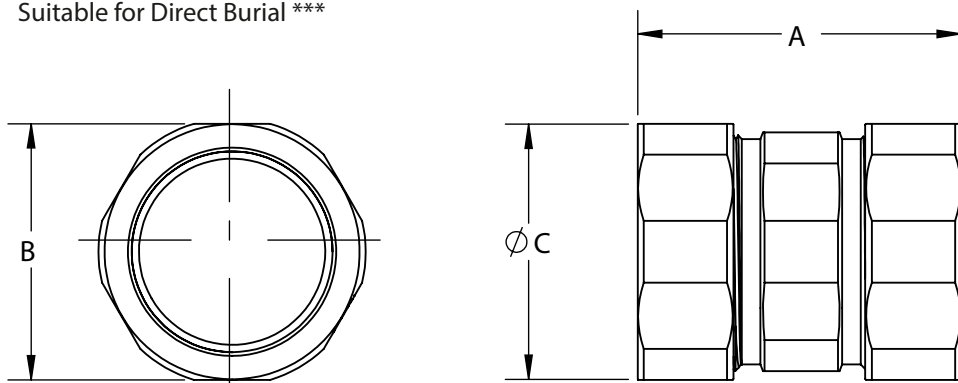
Industrial SPEC-grade
2 1/2" thru 4" Are UL Listed & Approved For Use on Both EMT & Rigid Conduit



Compression Coupling



Compression Nuts have a Full Flat Hex Surface



Twice the Strength and Durability with
a Fraction of the Weight and Size of Malleable Iron

| Cat # | TRADE SIZE | A LENGTH | B HEX | C DIAMETER | Wt. Per/C |
|----------------|------------|----------|----------|------------|-----------|
| NT2760 | 1/2" | 1-13/16" | 1-1/8" | 1-3/16" | 16 |
| NT2761 | 3/4" | 2-1/8" | 1-3/8" | 1-7/16" | 24 |
| NT2762 | 1" | 2-7/16" | 1-11/16" | 1-3/4" | 48 |
| NT2763 | 1-1/4" | 2-13/16" | 2-1/16" | 2-3/16" | 64 |
| NT2764 | 1-1/2" | 3-1/8" | 2-15/16" | 2-3/8" | 110 |
| NT2765 | 2" | 3-1/4" | 2-13/16" | 2-7/16" | 140 |
| ERC250CPLG (1) | 2-1/2" | 3-13/16" | 3-1/4" | 3-7/16" | 150 |
| ERC300CPLG (1) | 3" | 3-15/16" | 3-15/16" | 4" | 192 |
| ERC350CPLG (1) | 3-1/2" | 3-15/16" | 4-7/16" | 4-9/16" | 229 |
| ERC400CPLG (1) | 4" | 4" | 4-15/16" | 5-1/8" | 266 |

(1) 2 1/2" to 4" UL Listed and Rated for both EMT & Rigid Conduit. Product is stamped accordingly.

Compliances:

Certified Made in the USA

UL 514B, 467

Compression Fittings Concrete Tight

Suitable for Direct Burial ***

NEMA Standard FB1

Federal Standard A-A-50553

Certified for MIL-STD 810 Sinusoidal Vibrations

CSA Standard: C22.2 No. 18F

RoHS Compliant

REACH Compliant

CA Prop 65 Compliant

UNSPSC 39121311



Available OPTIONS:

RainTight Configuration - "RT series" See Catalog Page

** Galvanized Plating - Option

For this Option, Add Suffix "G" to Above Cat Number

Color Coded Painted (powder coated) Fittings - See Catalog Page

*** Rain Tight Series Recommended for

Direct Burial Requirements

Rigid RT Steel Compression Coupling

Size Range: 1/2" - 4"

Product Series: NT Rain Tight Rigid / IMC Compression Coupling

Material: Solid Alloy Steel Construction

Made in the USA

Features:

Precision Machined Cut Threads
AMFICO **EZ Torque** Solid Steel Compression Nuts
Easily Torques Tight and Right
Zinc Plated with a Chromate Finish **
UL Rated Concrete Tight UL Listed Rain Tight
Suitable for Direct Burial

Industrial SPEC-grade
2 1/2" thru 4" Are UL Listed & Approved For Use on **Both** EMT & Rigid Conduit

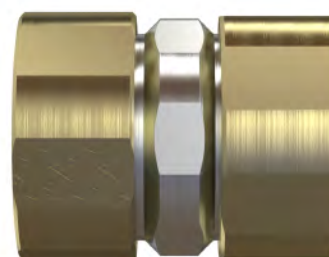
Compression Nuts Plated Gold Tone for
EZ Inspection and Identification

Compression Nuts have
Full Flat Hex Surface for Full Torque

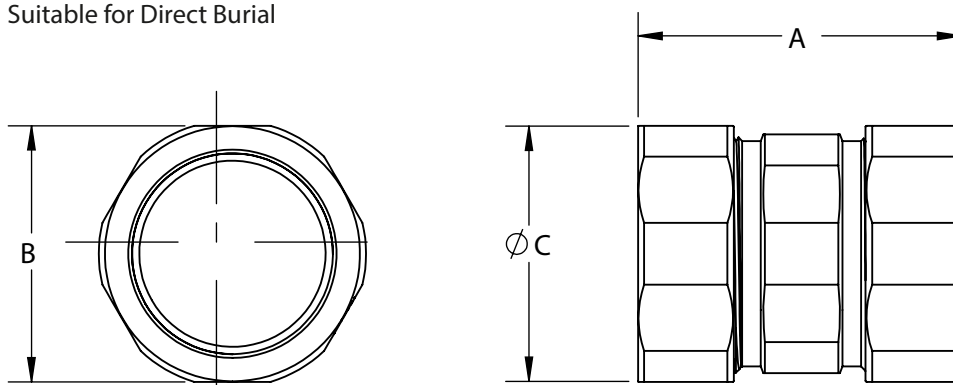
Guaranteed Rain Tight



RT Compression Coupling



EZ Torque Compression Nuts
Torque Tight & Right



Twice the Strength and Durability with
a Fraction of the Weight and Size of Malleable Iron

| Cat # | TRADE SIZE | A LENGTH | B HEX | C DIAMETER | Wt. Per/C |
|------------------|------------|----------|----------|------------|-----------|
| NT2760RT | 1/2" | 1-13/16" | 1-1/8" | 1-3/16" | 16 |
| NT2761RT | 3/4" | 2-1/8" | 1-3/8" | 1-7/16" | 24 |
| NT2762RT | 1" | 2-7/16" | 1-11/16" | 1-3/4" | 48 |
| NT2763RT | 1-1/4" | 2-13/16" | 2-1/16" | 2-3/16" | 64 |
| NT2764RT | 1-1/2" | 3-1/8" | 2-15/16" | 2-3/8" | 110 |
| NT2765RT | 2" | 3-1/4" | 2-13/16" | 2-7/16" | 140 |
| ERC250CPLGRT (1) | 2-1/2" | 3-13/16" | 3-1/4" | 3-7/16" | 150 |
| ERC300CPLGRT (1) | 3" | 3-15/16" | 3-15/16" | 4" | 192 |
| ERC350CPLGRT (1) | 3-1/2" | 3-15/16" | 4-7/16" | 4-9/16" | 229 |
| ERC400CPLGRT (1) | 4" | 4" | 4-15/16" | 5-1/8" | 266 |

(1) 2 1/2" to 4" UL Listed and Rated for both EMT & Rigid Conduit. Product is stamped accordingly.

Compliances:

Certified Made in the USA
UL 514B, 467 UL Listed Rain Tight
Compression Fittings Concrete Tight
Suitable for Direct Burial
NEMA Standard FB1
Federal Standard A-A-50553
Certified for MIL-STD 810 Sinusoidal Vibrations
CSA Standard: C22.2 No. 18F
RoHS Compliant
REACH Compliant
CA Prop 65 Compliant
UNSPSC 39121311



Available OPTIONS:

** Galvanized Plating - Option
For this Option, Add Suffix "G" to Above Cat Number

Color Coded Painted (powder coated) Fittings - See Catalog Page

Rain Tight Series Recommended for Direct Burial Requirements

Rigid Steel Compression Connector

Size Range: 1/2" - 4"

Product Series: NT Rigid / IMC Compression Connector

Material: Solid Alloy Steel Construction

Made in the USA

Features:

Precision Machined Cut Threads

AMFICO EZ **Torque** Solid Steel Compression Nut

Zinc Plated with a Chromate Finish **

UL Rated Concrete Tight

Suitable for Direct Burial ***

Industrial SPEC-grade
2 1/2" thru 4" Are UL Listed & Approved For Use on Both EMT & Rigid Conduit

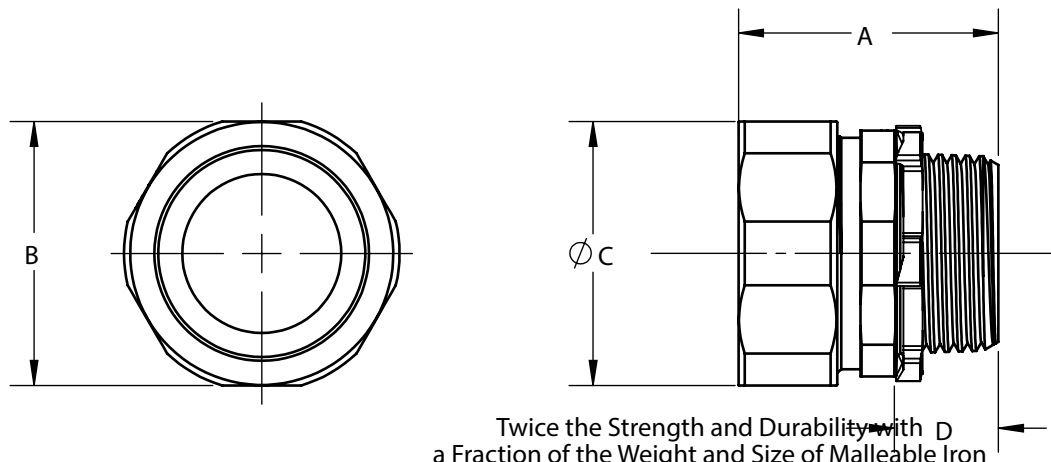
Compression Nut has a Full Flat Hex Surface



Compression Connector
Below Shown with
Optional Insulated Bushing



Furnished with a UL Listed
Steel Locknut



| Cat # | TRADE SIZE | A LENGTH | B HEX | C DIAMETER | D THREAD LENGTH | Wt. Per/C |
|----------------|------------|----------|----------|------------|-----------------|-----------|
| NT2750 | 1/2" | 1-1/2" | 1-1/8" | 1-3/16" | 1/2" | 13 |
| NT2751 | 3/4" | 1-5/8" | 1-3/8" | 1-7/16" | 1/2" | 20 |
| NT2752 | 1" | 1-15/16" | 1-11/16" | 1-3/4" | 11/16" | 36 |
| NT2753 | 1-1/4" | 2-1/8" | 2-1/16" | 2-3/16" | 11/16" | 48 |
| NT2754 | 1-1/2" | 2-3/8" | 2-5/16" | 2-3/8" | 3/4" | 70 |
| NT2755 | 2" | 2-1/2" | 2-13/16" | 2-7/8" | 3/4" | 100 |
| ERC250CONN (1) | 2-1/2" | 3-7/16" | 3-1/4" | 3-7/16" | 1" | 120 |
| ERC300CONN (1) | 3" | 4" | 3-15/16" | 4" | 1" | 165 |
| ERC350CONN (1) | 3-1/2" | 4-9/16" | 4-7/16" | 4-9/16" | 1" | 201 |
| ERC400CONN (1) | 4" | 5-1/8" | 4-15/16" | 5-1/8" | 1" | 237 |

(1) 2 1/2" to 4" UL Listed and Rated for both EMT & Rigid Conduit. Product is stamped accordingly.

Compliances:

Certified Made in the USA

UL 514B, 467

Compression Fittings Concrete Tight

Suitable for Direct Burial ***

NEMA Standard FB1

Federal Standard A-A-50553

Certified for MIL-STD 810 Sinusoidal Vibrations

CSA Standard: C22.2 No. 18F

RoHS Compliant

REACH Compliant

CA Prop 65 Compliant

UNSPSC 39121311



Available OPTIONS:

Factory Installed 105° UL Rating Insulated Bushing-
For this Option, Add Suffix B to Above Cat Number

RainTight Configuration - "RT series" See Catalog Page

** Galvanized Plating - Option

For this Option, Add Suffix "G" to Above Cat Number

Color Coded Painted (powder coated) Fittings- See Catalog Page

*** Rain Tight Series Recommended for
Direct Burial Requirements

Rigid RT Steel Compression Connector

Size Range: 1/2" - 4" Alloy Steel

Product Series: NT Rain Tight Rigid / IMC Compression Connector

Material: Solid Alloy Steel Construction

Made in the USA

Features:

Precision Machined Cut Threads

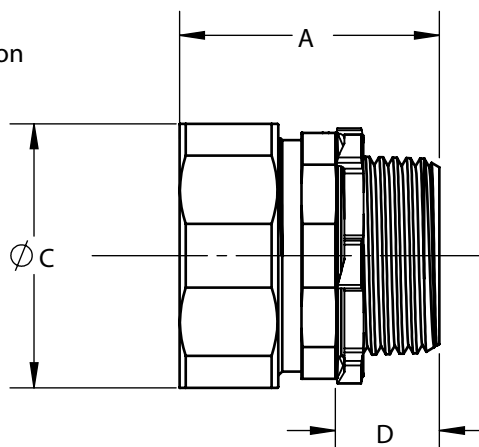
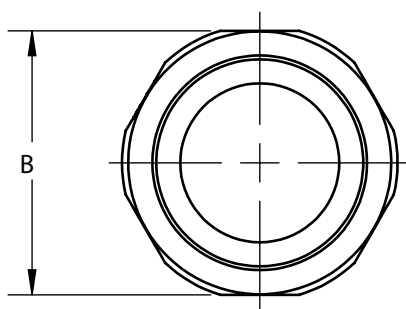
AMFICO EZ **Torque** Solid Steel Compression Nut

Zinc Plated with a Chromate Finish **

UL Rated Concrete Tight UL Listed Rain Tight

Suitable for Direct Burial

Twice the Strength and Durability with
a Fraction of the Weight and Size of Malleable Iron



RT Compression Connector



Furnished with a UL Listed
Steel Locknut Sealing Washer

| Cat # | TRADE SIZE | A LENGTH | B HEX | C DIAMETER | D THREAD LENGTH | Wt. Per/C |
|------------------|---------------|-------------|----------|---------------|-----------------------|--------------|
| NT2750RT | 1/2" | 1-1/2" | 1-1/8" | 1-3/16" | 1/2" | 13 |
| NT2751RT | 3/4" | 1-5/8" | 1-3/8" | 1-7/16" | 1/2" | 20 |
| NT2752RT | 1" | 1-15/16" | 1-11/16" | 1-3/4" | 11/16" | 36 |
| NT2753RT | 1-1/4" | 2-1/8" | 2-1/16" | 2-3/16" | 11/16" | 48 |
| NT2754RT | 1-1/2" | 2-3/8" | 2-5/16" | 2-3/8" | 3/4" | 70 |
| NT2755RT | 2" | 2-1/2" | 2-13/16" | 2-7/8" | 3/4" | 100 |
| ERC250CONNRT (1) | 2-1/2" | 3-7/16" | 3-1/4" | 3-7/16" | 1" | 120 |
| ERC300CONNRT (1) | 3" | 4" | 3-15/16" | 4" | 1" | 165 |
| ERC350CONNRT (1) | 3-1/2" | 4-9/16" | 4-7/16" | 4-9/16" | 1" | 201 |
| ERC400CONNRT (1) | 4" | 5-1/8" | 4-15/16" | 5-1/8" | 1" | 237 |

(1) 2 1/2" to 4" UL Listed and Rated for both EMT & Rigid Conduit. Product is stamped accordingly.

Compliances:

Certified Made in the USA

UL 514B, 467 UL Listed Rain Tight

Compression Fittings Concrete Tight

Suitable for Direct Burial

NEMA Standard FB1

Federal Standard A-A-50553

Certified for MIL-STD 810 Sinusoidal Vibrations

CSA Standard: C22.2 No. 18F

RoHS Compliant

REACH Compliant

CA Prop 65 Compliant

UNSPSC 39121311



Available OPTIONS:

Factory Installed 105° UL Rating Insulated Bushing-

For this Option, Add Suffix B to Above Cat Number

** Galvanized Plating - Option

For this Option, Add Suffix "G" to Above Cat Number

Color Coded Painted (powder coated) Fittings- See Catalog Page

Rain Tight Series Recommended for Direct Burial Requirements