

Rigid Steel Chase Nipple

Size Range: 1/2" - 4"

Product Series: CN - Rigid Threaded Chase Nipples

Material: Solid Alloy Steel Construction

Zinc Plated with Chromate Finish **

Made in the USA

Precision Machined from Solid Alloy Bar Stock
 Machined Cut Threads
 Full Compression Flat Hex Head for EZ Torque
 Low Profile Design, Takes Up Less Space

CN Series is Rain Tight***

Industrial SPEC-grade

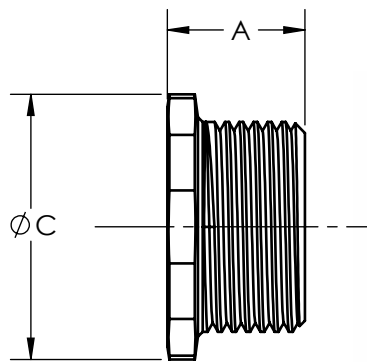
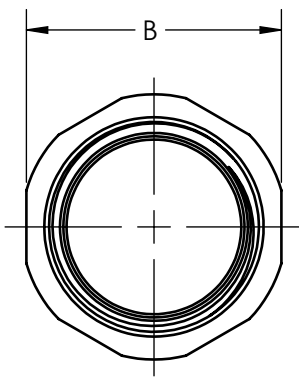
For use with Rigid Conduit Runs
 Use with a locknut to connect two boxes side by side or back to back.
 Use with a locknut to connect fixture housing to continuous runs



Smooth Fully Machined ID for EZ Burr-less Wire Pull

* Optional: 105°c Throat Bushing

TWICE the Strength and Durability of All Die Cast & Malleable Iron Products



Machine Cut Threads
 Assure Tight & Right Fit
 Vibration Resistant

(1) Dupont Zytel Insulated Bushing Available, Factory Installed

Cat # ** (1)	Trade Size	A Length	B Hex	C Diameter	Wt. Per/C
CN50	1/2"	9/16"	15-16"	1"	4
CN75	3/4"	5/8"	1-3/16"	1-1/4"	6
CN100	1"	7/8"	1-9/16"	1-5/8"	12
CN125	1-1/4"	15/16"	1-13/16"	1-7/8"	15
CN150	1-1/2"	1"	2-1/16"	2-1/8"	20
CN200	2"	1-1/16"	2-9/16"	2-5/8"	27
CN250	2-1/2"	1-1/4"	3-5/16"	3-7/16"	58
CN300	3"	1-1/4"	3-15/16"	4"	64
CN350	3-1/2"	1-1/4"	4-1/2"	4-9/16"	90
CN400	4"	1-1/4"	4-15/16"	5-1/8"	192

Compliances:

Certified Made in the USA
 UL 514B, 467
 Concrete Tight and Rain Tight
 Suitable for Direct Burial
 NEMA Standard FB1
 Federal Standard A-A-50553
 CSA Standard: C22.2 No. 18F
 RoHS Compliant
 REACH Compliant
 CA Prop 65 Compliant
 UNSPSC 39131707



Available OPTIONS:

(1) Insulated Throat Bushing Dupont Zytel Factory Installed - Option
 For this Option Add Suffix "B" to Above Cat Number

** Galvanized Plating - Option
 For this Option, Add Suffix "G" to Above Cat Number

*** When Installed with a Sealing Washer - Product Series SW

Compliment with our HDI LOCKnut and a Sealing Washer for Complete Environmental Protection and Full Bonding