

American Fittings Corporation

Product Group Line Card

Specification Grade
Industrial Electrical Fittings



Designing & Manufacturing a Tradition of Innovation, Quality, & Integrity Since 1946

800.221.5268

amftgs.com

Connectors & Couplings

- Compression or Set Screw with Solid Conduit Stop
- Rain Tight and Direct Burial Options
- Zinc Chromate Plated or Galvanized Plating Option
- Connectors Available with an Insulated Throat Bushing



3 Piece Couplings "Ericksons"

- Precision Machine Cut Threads Avoids Cross Threading
- Rain Tight and Direct Burial Options
- Zinc Chromate Plated or Galvanized Plating Option
- EZ Torque to Full Values With Consistent Centerline



Hubs Water Tight "Myers"

- Next Generation Grounding Hubs Low Profile Design
- Zinc Chromate Plated or Galvanized Plating Option
- The Most Grounding Options in the Industry
- Solid Steel Outperforms ALL Myers Style Hubs



Conduit Unions Male & Female

- Next Generation from Solid Bar Stock Not Cast
- UL Listed Ordinary & Hazardous Locations
- Low Profile Design and Outperforms All Cast Products
- Fully Machined Body and Threads, No Burrs No Snags



Insulated Grounding Bushings

- Available with and without Ground Lugs (CU Option)
- Zinc Chromate Plated or Galvanized Plating Option
- Threaded or Set Screw Option - Vibration Resistant
- EZ Install - 3 Mounting Holes to Reposition Ground Lug



Reducing Bushings

- Alloy Steel or Aluminum (CU Free)
- UL Listed Ordinary or Hazardous Locations
- No Burrs to Catch Threads or Snag Wire
- Solid Bar Construction, Outperforms Cast Products



Chase Nipples & Enlargement Fittings

- Solid Steel Construction, CN Insulated Throat Option
- Zinc Chromate Plated or Galvanized Plating Option
- Machine Cut Threads to Install Faster and More Reliably
- Zero Burrs with a Fully Machined ID Avoids Wire Snags



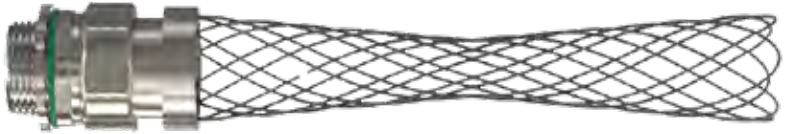
Seal Tight Fittings Straight, 90°, 45°

- 1/2" to 4" Available with AL or CU Ground Lugs
- Steel, Aluminum and Stainless
- 90 & 45 Configurations Provide UL Rated Arc of Bend
- Zinc Plated with Chromate Finish - Galvanizing Option



LT Connectors with Wire Mesh

- Straight, 90° and 45° Configuration
- Precision Machine Cut NPT Threads
- The Ultimate LT Protection for SR Drop Cords
- Furnished with Locknut and Sealing Washer



LT Adapter to Conduit

- 1/2" to 4" Adapters Convert LT to EMT or Rigid Conduit
- Rigid Available in Compression or Threaded
- All Steel Construction, Zinc Plated, Chromate Finish
- Hex Nuts Provide EZ Compression with Full Torque



Non-Metallic LT for Type B Conduit

- 3/8" to 2" Straight & 90° Connectors
- For Use with Type B (NM, NMHT, NMFG, and NM2)
- Furnished with Industrial Grade Locknut
- UV Rated PVC



AC, MC, FMC Connectors, Made in the USA

AC MC Connector

- 1/2" to 2" Trade Sizes
- Double Redundancy Gate Avoids Twist or Pull Outs
- Furnished with Factory Installed Insulated Bushing
- Machined from Solid Bar Stock for Strength



PVC Jacketed Armored Cable - Teck

- Fully Machine Alloy Steel Fitting
- Kit Accommodates Various Cable OD's
- No Need to Disassemble, Fully Integrated Ground
- Solid Bar Construction, Outperforms Cast Products



FMC / Greenfield Conduit Connector

- No Tools Needed to Install, Turns On to FMC
- Take the Squeeze Out of Your Fittings
- Solid Steel Construction, Zinc Chromate Plated
- Factory Installed Insulated Bushing



Straight Cord Connectors

- 1/2" to 2" Steel, Aluminum & Stainless Steel
- Fully Machine Bodies and Nuts
- Color Coded Santoprene FDA Approved Grommets
- Liquidtight/Oiltight/Raintight NEMA 4X, NPT Threads



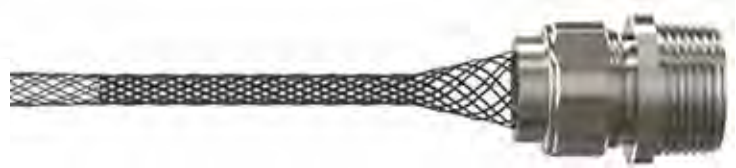
90° & 45°

- Precision Machine Cut Threads Avoids Cross Threading
- True Arc of Bend Avoids Cable Crunch
- Zinc Chromate Plated
- EZ Torque Flex Hex Nuts to Eliminate Cable Twist



Cord Connectors with Wire Mesh SR

- 1/2" to 2" in Straight Configuration
- 1/2" to 1" in 90° & 45°
- Adjusts to Wide Range of Cable or Cord Diameters
- Ultimate Choice for Drop Cords



Multi Hole or UF Flat Cable Connectors

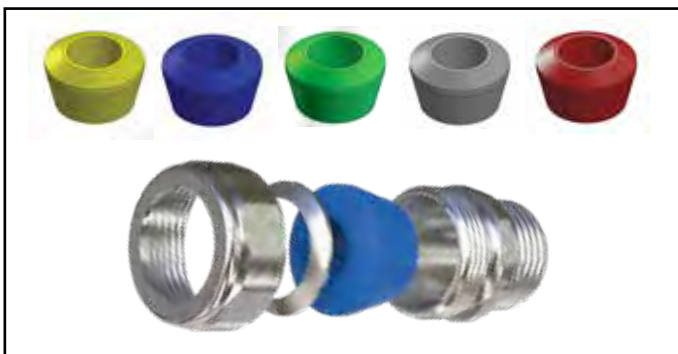
- 2 Hole or 3 Hole Configurations for Cable Entries
- 1/2" & 3/4" UF Connector for Underground Feeder
- Fully Machined Threads and Body
- Low Profile Design and Outperforms All Cast Products



Cord Grip Kits - One Bag Does It All

- Each Kit Accommodates a Wide Variety of Cord Sizes
- Take the Guesswork Out of What Size Fits
- 1/2" to 2" in Steel
- 1/2" to 1" in Aluminum or Stainless

Each Kit Contains:
 1 Fully Assembled Cord Grip
 Numerous Grommets to Precisely Fit Your Cable.
 Color Coded Chart for Sizes Included in Each Kit



Eliminate the Guesswork in Cable Sizes
 Consolidate Your Inventory Items

JOB READY Cord Grip KITS



Kits Available:
 1/2" to 2" Steel
 1/2" to 1" Aluminum or Stainless Steel

Compression Connectors & Couplings

- 2 1/2" to 4" UL Listed Dual Rated for Rigid Conduit
- Option - UL Listed Rain Tight Furnished with Gold Nuts
- Connector Option for an Insulated Throat Bushing
- EZ Torque Compression Nuts, Secure Full Torque Values



Set Screw Connectors & Couplings

- 2 1/2" to 4" UL Listed Dual Rating for Rigid Conduit
- Solid Conduit Stop Provides Precise Conduit Location
- PosiDrive Combo Steel Screws
- Fully Machined Threads Allows Full Torque



Color-Coded EMT Fittings

- SPECTRUM EMT Series
- Durable Powder Coated Fittings Over Zinc Plating
- Standard Industry Colors as an Option
- Set Screws and Compression Nuts Torque Without Issue



EMT Adapters Conduit Convertors

- EMT Compression to Rigid Threaded ETR
- EMT Compression to Liquid Tight Conduit STREMT
- Fully UL Listed and Approved as Combo Fittings
- Solid Steel Machined Construction Fits Tight and Right



EMT Adapters to Flex Metal Conduit

- Available Set Screw and Compression to FMC 1/2" -4"
- Zinc Chromate Plated or Galvanized Plating Option
- SPECflex Fittings Exceeds UL Pullout by 300%
- EZ Install No Need to Take Fitting Apart



Straps, Hangers & Penetration Sleeves

- 1/2" to 4", 1 Hole, 2 Hole Single Bolt, Support Braces
- Available for EMT and Rigid Conduit
- Made in the USA
- Steel Construction, Zinc Plated



Industrial Grade Steel Locknuts

- LN Series - Steel 1/2" to 2" Made in the USA
- HDI Series - Steel 1/2" to 4" Made in the USA
- HDI Feature our Designed Bonding Diamond Cut Face
- HDI Feature Unique Notches to Assist the Install





Better Products, Better Ideas, Better Value, Think AMERICAN



AMFICO

Innovating the Next Generation of Electrical Fittings

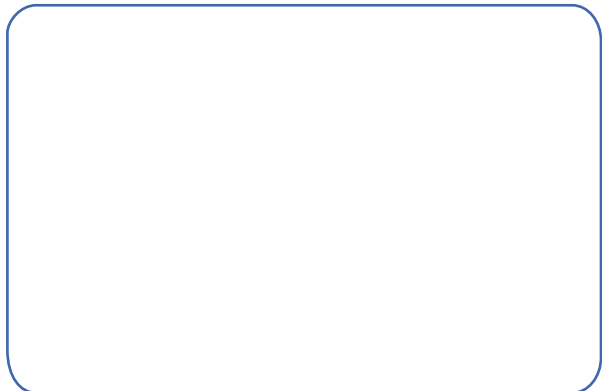
EMT RIGID CONDUIT LIQUID TIGHT FLEXIBLE CORD FLEX METAL CONDUIT

Founded in 1946, a family owned and operated, 3rd generation business, we have grown into the world's largest manufacturer of alloy steel electrical fittings. Headquartered in New Jersey, all products are sold exclusively through Authorized Stocking Distributors.

Our products are made in the USA, and they will exceed your requirements and expectations, not your budget. We never apologize why our products are made in America; we suggest you ask our competitors "why they don't"! Random lot shipping inspection in a foreign country can never replace integrity manufactured into raw materials and manufacturing in this country. Don't consider us as just a government project supplier, consider us as your fitting supplier for all types of projects.

We Provide the Best Out of Stock Fulfillment Rate in the Country

Sold Exclusively Through Authorized Distributors



We Are the ONLY Manufacturer of a Full Range of Steel Electrical Fittings Made in the USA



Manufacturing and Corporate Offices

AMERICAN FITTINGS Corporation
17-10 Willow Street Fair Lawn, NJ 07410
t: 800.221.5268 | f: 201.664.1175



Online: amftgs.com e: info@amftgs.com

Follow us on

