

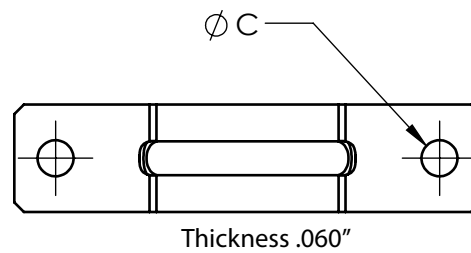
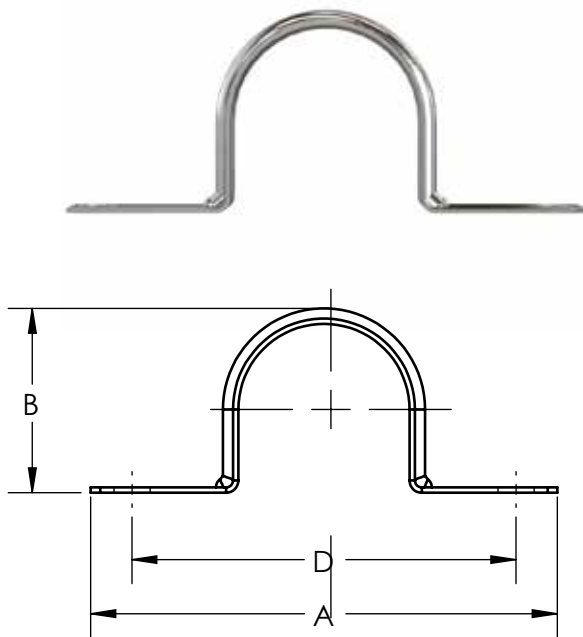
EMT Two Hole Straps

Size Range: 1/2" - 4"
 Product Series: CSE - 2 Hole EMT Strap
 Material: Steel Construction
 Bright Electro Zinc Plated
 Made in the USA

Industrial SPEC-grade

CSE Series EMT Steel Straps

AMFICO Steel Two Hole Straps Snap On to the Conduit Allowing the Installer to Easily Position the Strap Prior to Mounting. Alignment of EMT is Quick and Easy.



Cat #	TRADE SIZE	A LENGTH	B HEIGHT	C HOLE ID	HOLE SPACING	Wt. Per/C	Unit Ctn.	Mstr. Ctn.
CSE502	1/2"	2-1/4"	13/16"	3/16"	1-13/16"	2	100	1000
CSE752	3/4"	2-5/8"	1-1/16"	3/16"	2-3/16"	3	100	500
CSE1002	1"	3-1/4"	1-5/16"	1/4"	2-9/16"	5	50	250
CSE1252	1-1/4"	4"	1-11/16"	1/4"	3-3/16"	7	30	150
CSE1502	1-1/2"	4-1/4"	1-7/8"	1/4"	3-3/8"	12	25	125
CSE2002	2"	5-1/8"	2-3/8"	3/8"	4-1/4"	15	20	75
CSER2502	2-1/2"	5-7/8"	2-7/8"	3/8"	5"	17	-	20
CSER3002	3"	6-1/2"	3-1/2"	3/8"	5-1/2"	23	-	10
CSER3502	3-1/2"	7/1/8"	4"	7/16"	6-3/16"	26	-	10
CSER4002	4"	7-3/4"	4-1/2"	7/16"	6-13/16"	33	-	10

Compliances:

Certified Made in the USA
 Indoor or Outdoor Use
 RoHS Compliant
 REACH Compliant
 CA Prop 65 Compliant
 UNSPSC 31162310



Available OPTIONS:

1 Hole Straps EMT and Rigid

One-Hole BX Type

Cat. #	Size	Unit Ctn	Std Pkg	WT/ 100
CSBX381	12-2, 12-3, 10-2, 10-3	100	1000	1