

## Rigid AL Reducing Bushings - Haz.

Size Range: 1/2" - 4"

Product Series: RBH Reducing Bushings for Hazardous Locations

Material: Aluminum (Copper Free) Solid Bar Construction

**Industrial SPEC-grade**

For Use on Rigid / IMC Conduit

Reduces the Threaded Opening on Conduit Bodies or any Female Threaded Fitting.

*Made in the USA*

*Twice the Strength and Durability of Cast Aluminum*

**Features:**

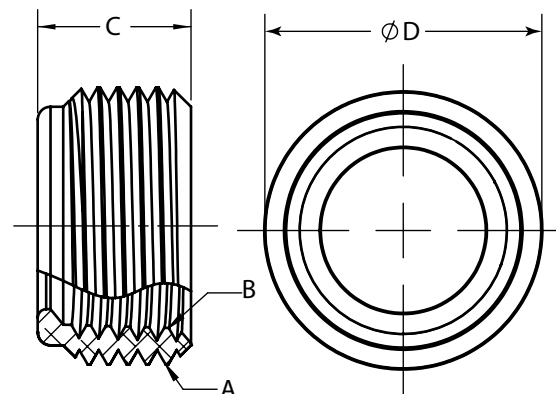
Precision Machined Cut NPT Tapered Threads

Smooth ID for EZ Fast Wire Pull



ALUMINUM (Cu Free)

Hazardous Locations Reducing Bushings



CAT #	Trade Size	A External Thread	B Internal Thread	C Length	D Diameter	Wt. Per/C
RB7550HAL	3/4" x 1/2"	3/4"-14 NPT	1/2"-14 NPT	3/4"	1-1/16"	3
RB10050HAL	1" x 1/2"	1"-11.5 NPT	1/2"-14 NPT	3/4"	1-5/16"	6
RB10075HAL	1" x 3/4"	1"-11.5 NPT	3/4"-14 NPT	3/4"	1-5/16"	4
RB12550HAL	1-1/4" x 1/2"	1-1/4"-11.5 NPT	1/2"-14 NPT	7/8"	1-5/8"	12
RB12575HAL	1-1/4" x 3/4"	1-1/4"-11.5 NPT	3/4"-14 NPT	7/8"	1-5/8"	10
RB125100HAL	1-1/4" x 1"	1-1/4"-11.5 NPT	1"-11.5 NPT	7/8"	1-5/8"	7
RB15050HAL	1-1/2" x 1/2"	1-1/2"-11.5 NPT	1/2"-14 NPT	15/16"	1-7/8"	19
RB15075HAL	1-1/2" x 3/4"	1-1/2"-11.5 NPT	3/4"-14 NPT	15/16"	1-7/8"	16
RB150100HAL	1-1/2" x 1"	1-1/2"-11.5 NPT	1"-11.5 NPT	15/16"	1-7/8"	13
RB150125HAL	1-1/2" x 1-1/4"	1-1/2"-11.5 NPT	1-1/4"-11.5 NPT	15/16"	1-7/8"	7
RB20050HAL	2" x 1/2"	2"-11.5 NPT	1/2"-14 NPT	15/16"	2-3/8"	33
RB20075HAL	2" x 3/4"	3/4"-14 NPT	3/4"-14 NPT	15/16"	2-3/8"	31
RB200100HAL	2" x 1"	2"-11.5 NPT	1"-11.5 NPT	15/16"	2-3/8"	27
RB200125HAL	2" x 1-1/4"	2"-11.5 NPT	1-1/4"-11.5 NPT	15/16"	2-3/8"	22
RB200150HAL	2" x 1-1/2"	2"-11.5 NPT	1-1/2"-11.5 NPT	15/16"	2-3/8"	17
RB250100HAL	2-1/2" x 1"	2-1/2"-8 NPT	1"-11.5 NPT	1-1/8"	2-13/16"	53
RB250125HAL	2-1/2" x 1-1/4"	2-1/2"-8 NPT	1-1/4"-11.5 NPT	1-1/8"	2-13/16"	44
RB250150HAL	2-1/2" x 1-1/2"	2-1/2"-8 NPT	1-1/2"-11.5 NPT	1-1/8"	2-13/16"	37
RB250200HAL	2-1/2" x 2"	2-1/2"-8 NPT	2"-11.5 NPT	1-1/8"	2-13/16"	29
RB300125HAL	3" x 1-1/4"	3"-8 NPT	1-1/4"-11.5 NPT	1-1/8"	3-7/16"	78
RB300150HAL	3" x 1-1/2"	3"-8 NPT	1-1/2"-11.5 NPT	1-1/8"	3-7/16"	71
RB300200HAL	3" x 2"	3"-8 NPT	2"-11.5 NPT	1-1/8"	3-7/16"	52
RB300250HAL	3" x 2-1/2"	3"-8 NPT	2-1/2"-8 NPT	1-1/8"	3-7/16"	31
RB350150HAL	3-1/2" x 1-1/2"	3-1/2"-8 NPT	1-1/2"-11.5 NPT	1-1/4"	4"	110
RB350200HAL	3-1/2" x 2"	3-1/2"-8 NPT	2"-11.5 NPT	1-1/4"	4"	92
RB350250HAL	3-1/2" x 2-1/2"	3-1/2"-8 NPT	2-1/2"-8 NPT	1-1/4"	4"	69
RB350300HAL	3-1/2" x 3"	3-1/2"-8 NPT	3"-8 NPT	1-1/4"	4"	32
RB400200HAL	4" x 2"	4"-8 NPT	2"-11.5 NPT	1-1/4"	4-1/2"	138
RB400250HAL	4" x 2-1/2"	4"-8 NPT	2-1/2"-8 NPT	1-1/4"	4-1/2"	115
RB400300HAL	4" x 3"	4"-8 NPT	3"-8 NPT	1-1/4"	4-1/2"	72
RB400350HAL	4" x 3-1/2"	4"-8 NPT	3-1/2"-8 NPT	1-1/4"	4-1/2"	37

### Compliances:

Certified Made in the USA

UL 1203

UL Listed for Hazardous Locations,

Class I, Division 1 & 2, Groups A, B, C, D

Class II, Division 1, Groups E, F, G

Class II, Div 1 & 2

NEMA Standard FB1

Federal Standard A-A-50553

UL Standards: 514B, 467

CSA Standard: C22.2 No. 30

RoHS and REACH Compliant

Prop.65 CA Compliant

UNSPSC 39121312



### Available Options:

Other Configurations and Material

Hazardous Locations in Steel Construction

Ordinary Locations in Steel and Aluminum