

# Industrial Grade Steel Locknuts

Size Range: 1/2" - 4"

Product Series: LN Industrial Locknut

Material: Steel Construction

Zinc Plated

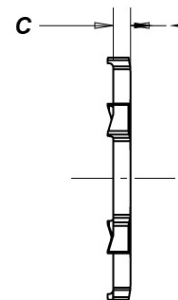
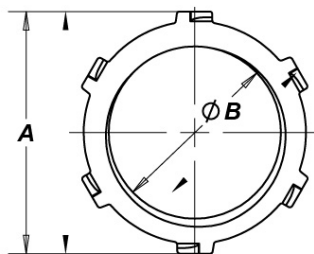
Made in the USA \*except as noted below

Precisioned Stamped with Cut Threads

Industrial Grade Will Not Distort or Crack Under Load  
 Stays Flat for Full Bonding to Box  
 Tangs Bite Into Enclosure for  
 Vibration Resistant

## Industrial SPEC-grade LN Series LOCKnuts

Used to Fasten Threaded  
 Rigid or IMC Conduit or Fittings  
 to Box, Apparatus or Enclosure.



CAT #	TRADE SIZE	A DIAMETER	B INNER DIAMETER	C THICKNESS	Wt. Per/C
LN50L	1/2"	1-1/8"	3/4"	1/8"	1
LN75L	3/4"	1-3/8"	1"	1/8"	2
LN100L	1"	1-11/16"	1-1/4"	1/8"	4
LN125L	1-1/4"	2-1/16"	1-9/16"	1/8"	5
LN150L	1-1/2"	2-3/8"	1-13/16"	1/8"	6
LN200L	2"	2-7/8"	2-5/16"	1/8"	7
LN250*	2-1/2"	3-7/16"	2-3/4"	3/16"	11
LN300*	3"	4-1/16"	3-7/16"	3/16"	15
LN350*	3-1/2"	4-11/16"	3-7/8"	3/16"	19
LN400*	4"	5-1/4"	4-3/8"	3/16"	23

\* 2-1/2 to 4" Commerical Grade Locknuts are Not Our Manufacture and Do Not Meet Made in USA Requirements. For 2 1/2" to 4" If USA is Required Please Refer to Our HDI Series Locknuts.

Rev. 05-2025

**Compliances:**

- Certified Made in the USA *except as noted below*\*
- UL 514B \*
- NEMA Standard FB1
- Federal Standard A-A-50553
- CSA Standard: C22.2 No. 18F
- RoHS Compliant
- REACH Compliant
- CA Prop 65 Compliant
- UNSPSC 39121311



**Available OPTIONS:**

- Heavy Duty Industrial Bonding Locknuts HDI Series
- Heavy Duty True Tight Grounding Locknuts AH Series

Compliment with our Product Series SW Sealing Washers for Complete Environmental Protection.