

AMFICO WaterTIGHT Steel Hubs

The NEXT Generation of Myers Hub. We Didn't Imitate It! We Reengineered It!
 Designed with the Help of Contractors, Then Engineered & Manufactured by AMFICO in the USA

AH Series Hubs Size Range: 1/2" - 4", Available in Alloy Steel, Aluminum, Stainless Steel
 Full Zinc Plating with a Chromate Finish or Galvanized Plating Option

Twice the Strength and Durability of ALL Cast Products, Takes Up Less Space In and Out of the Box

A Steel Hub that Matches Your Rigid Steel Conduit, Thread Steel on Steel and Eliminate Inferior Die Cast or Malleable Iron Issues

Sleek Modern Design Matches Newer Panel Appearances

Machined Cut Steel NPT Threads at Conduit Entry
 Avoid Soft Material Cross Threading
 Seals Tight On Rigid Conduit

Flat Hex Surfaces Provides Full Torque Value to Locknut for **Full Environmental Protection**

Entire Fitting is Precision Machined Provides a **Uniform Center Line** Maintains Integrity of Connector through the Enclosure

This Steel Hub Will Self Align Conduit Vertically to Enclosure Avoiding Gaps and Alignment Issues

HPDE **Corrosion Resistant FLAT Sealing Washer** is Shrouded in Retention Ring Ensures a **Positive Seal & Bond**

Locknut has **Flat Hex Surface** For **EZ Interior Access** and Full Torque

Threaded Holes Provided Allows **Addition of Lug or Grounding** After Rough In or Inspection

Unique Solid Steel Locknut With **Numerous Grounding Options** (can be purchased separately)



Exclusive EZ Fit Conduit Entrance
 Hub Entry is Chamfered & Allows Proper Conduit Alignment & Strength of the Steel Threads Ensures Watertight Sealing at Entry

Low Profile Design
 Takes Up Less Exterior Space On Your Enclosure and Less Interior Space for Ease of Wiring

Large Wires No Problem to Pull Mirror Smooth ID Surface for **EZ No Snag, Burrless Wire Pulls**

Factory Installed **Insulated Bushing UL Rated 150°C** Will Not Pull Out During **Large Size Wire Pulls**

Machined Alloy Steel, **Concave Retention Ring Seats Sealing Washer Tight & Flat**

Unlike "O" Ring Products, This Hub **Seal is Flat & Uniform** at Entry TO Lockout Water and Moisture

Exclusive TrueTIGHT Locknut

Fully Machined Distinctive **Diamond Shaped Knurled Serrations** Bite **TIGHT & RIGHT** Into All Metals & Finishes

Will Not Vibrate Loose Maintains Watertight Seal

Will Not Harm or Crack FRP, Non-Metallic Enclosures

Notches On OD of Locknut Provide a Strong Precision Area to Bump & Lock in Place

AMFICO WaterTIGHT Ground Hubs

More Options Offered to Meet Your Requirements



Style 1 AHB Standard Hub
Available with a Single Ground Screw on Locknut
Replaces All ST, WH, HUB, & CH Series Competitors' Hubs



Style 2 AHBGS Ground Hub * with Tab with Ground Screw
Replaces All STG, HUBG, & CHT Competitors' Hubs



Style 3 AHBGL Ground Hub* with Lay-In Lug Avail up to 250mcm UL Listed
Replaces DCG & WHG Competitors' Hubs

Also Available **Style 4 AHBS** Furnished with a Single Grounding Screw on the Locknut

* Ideal Connection for Service Entrance Equipment

American Fittings Hub Compared to the Competition Material Comparison of Electrical Fittings

ASTM Physical Test	Alloy Steel Bar AMFICO	Malleable Iron THEIRS	* Zinc Die Cast THEIRS
Tensile Strength KPSI	88	41	37
Brinell Hardness	163	102-116	80

Consider the durability of the fitting, strength under load, and hardness of threads to maintain environmental integrity. Our thread strength ensures stress free installations.

AH Series AMFICO Hubs

Size Range:

1/2" to 4" Trade Sizes

Materials Available:

- Alloy Steel
- Aluminum
- Stainless Steel

Compliances:

Certified Made in the USA

UL Listed: 514B, 467

NEMA Standard FB1

Rated NEMA Types 2, 3, 3R,
3, 4X, 5, 12, 13

NEC/CEC

Suitable for Hazardous Locations:
Class I, Division 2;

Class II, Divisions 1 and 2;

Class III, per

NEC 501.10(B)(4), 502.10(A)(1)(4),

502.10(B)(4), 503.10(A)(1)

Federal Standard A-A-50553

Classified for Service Entrance

Meets the Requirements of

NEC Article 250.92 for

Bonding of Equipment for

Services and NEC 250.97

CSA Standard: C22.2 No. 18F

RoHS and REACH Compliant

Prop.65 CA Compliant

UNSPSC 39121311



File # E258495



Ground Hubs Steel Water Tight

Size Range: 1/2" - 4"

Product Series: AH Threaded Ground Hub Water Tight

Material: Solid Alloy Steel Construction *

Zinc Plated, Chromate Finish**

Sealing Ring: HPDE Chemical Resistant Polyethylene

Insulated Throat Bushing: UL Listed Rated 150° c

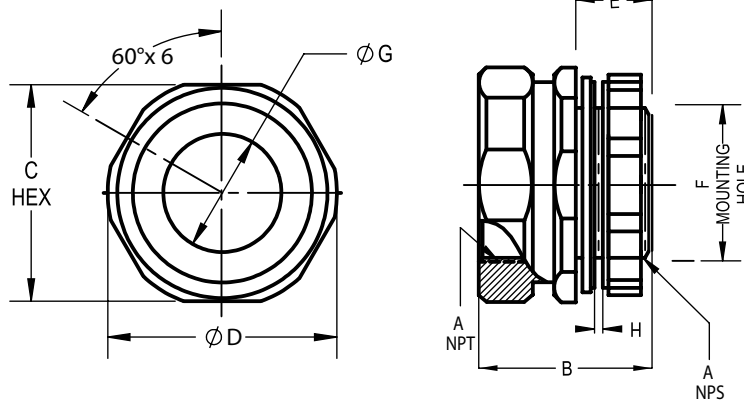
Made in the USA

Solid Steel Construction

Precision Cut Machined Threads

Low Profile Design - More Wiring Space and Conduit Space

Flat Hex Surface for Full Torque Values



Industrial SPEC-grade

AMFICO AH Series Ground Hubs connect Rigid/IMC conduit to an enclosure, offering supply-side equipment bonding and grounding with various options. The combination of an insulated threaded hub and grounding locknut provides a reliable ground fault path for service entrance equipment, eliminating the need to install an additional grounding bushing.

AMFICO's Hubs meet the requirements of NEC Article 250.92 for Bonding of Equipment for Services and NEC 250.97

Guaranteed Water Tight



Twice the Strength & Durability of ALL Cast and Malleable Iron Products

Cat #	Trade Size	A Threads (fNPT - mNPS)	B	C (Hex)	Ø D	E	F	Ø G	H***	Wt. Per/C
AH50B	1/2"	1/2"-14	1-3/16	1-1/8	1-3/16	9/16	7/8	9/16	3/32	17
AH75B	3/4"	3/4"-14	1-3/16	1-3/8	1-7/16	9/16	1-1/8	3/4	3/32	22
AH100B	1"	1"-11.5	1-1/2	1-5/8	1-11/16	11/16	1-3/8	1	3/16	39
AH125B	1-1/4"	1-1/4"-11.5	1-1/2	2-1/16	2-1/8	11/16	1-3/4	1-5/16	3/16	50
AH150B	1-1/2"	1-1/2"-11.5	1-1/2	2-3/16	2-5/16	11/16	2	1-9/16	3/16	52
AH200B	2"	2"-11.5	1-1/2	2-11/16	2-3/4	11/16	2-1/2	2	3/16	67
AH250B	2-1/2"	2-1/2"-8	2-1/2	3-1/4	3-7/16	1-1/8	3	2-5/16	3/8	173
AH300B	3"	3"-8	2-9/16	3-15/16	4	1-1/8	3-5/8	2-15/16	3/8	231
AH350B	3-1/2"	3-1/2"-8	2-9/16	4-7/16	4-9/16	1-1/8	4-1/8	3-7/16	3/8	285
AH400B	4"	4"-8	2-9/16	4-15/16	5-1/8	1-1/8	4-11/16	3-7/8	3/8	338

*** "H" Dimension Indicates Maximum Panel Thickness Hub Will Accomodate.

Compliances:

Certified Made in the USA

UL 514B, 467

NEC/CEC — Suitable for hazardous locations: Class I, Division 2;

Class II, Divisions 1 and 2;

Class III, per NEC 501.10(B)(4), 502.10(A)(1)(4), 502.10(B)(4), 503.10(A)(1)

NEMA Standard FB

Rated NEMA Types 2, 3, 3R, 3, 4X, 5, 12, 13

Federal Standard A-A-50553

Classified for Service Entrance

CSA Standard: C22.2 No. 18F

RoHS and REACH Compliant

Prop.65 CA Compliant

UNSPSC 39121311



File # E258495

Available OPTIONS:

* Materials: Aluminum Copper Free and Select Sizes in Stainless Steel T316

** Galvanized Plating Option

Add Suffix "G" to cat # i.e. AH50BG - minimum qty's may apply

Grounding Options (See Individual Catalog Pages) Ground Screw, Bonding Strap, or Ground Lugs

Copper Lugs and Aluminum Ground Lugs with Various Size Wire Capacity Options Available

Ground Hubs Aluminum Water Tight

Size Range: 1/2" - 4"

Product Series: AH Threaded Ground Hub Water Tight

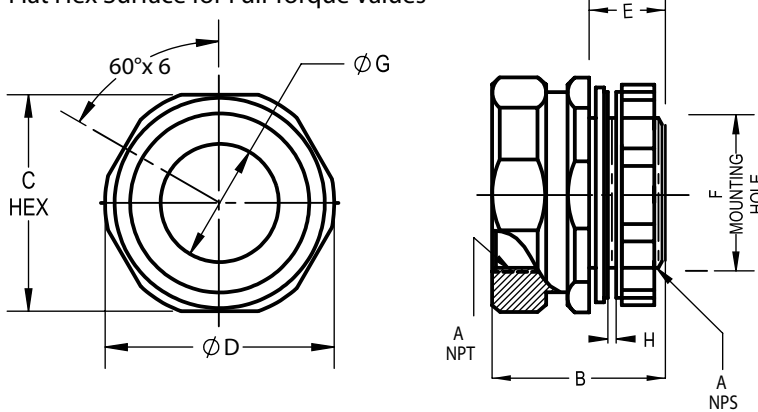
Material: Aluminum (Copper Free) *

Sealing Ring: HPDE Chemical Resistant Polyethylene

Insulated Throat Bushing: UL Listed Rated 150° c

Made in the USA

Solid Aluminum (Cu Free) Bar Stock Construction
 Precision Cut Machined Threads
 Low Profile Design - More Wiring Space and Conduit Space
 Flat Hex Surface for Full Torque Values



Industrial SPEC-grade

AMFICO AH Series Ground Hubs connect Rigid/IMC conduit to an enclosure, offering supply-side equipment bonding and grounding with various options. The combination of an insulated threaded hub and grounding locknut provides a reliable ground fault path for service entrance equipment, eliminating the need to install an additional grounding bushing.

AMFICO's Hubs meet the requirements of NEC Article 250.92 for Bonding of Equipment for Services and NEC 250.97

Guaranteed Water Tight



Twice the Strength & Durability of ALL Cast Aluminum Products

Cat #	Trade Size	A Threads (fNPT-mNPS)	B	C (Hex)	Ø D	E	F	Ø G	H***	Wt. Per/C
AH50BAL	1/2"	1/2"-14	1-3/16	1-1/8	1-3/16	9/16	7/8	9/16	3/32	6
AH75BAL	3/4"	3/4"-14	1-3/16	1-3/8	1-7/16	9/16	1-1/8	3/4	3/32	8
AH100BAL	1"	1"-11.5	1-1/2	1-5/8	1-11/16	11/16	1-3/8	1	3/16	14
AH125BAL	1-1/4"	1-1/4"-11.5	1-1/2	2-1/16	2-1/8	11/16	1-3/4	1-5/16	3/16	19
AH150BAL	1-1/2"	1-1/2"-11.5	1-1/2	2-3/16	2-5/16	11/16	2	1-9/16	3/16	20
AH200BAL	2"	2"-11.5	1-1/2	2-11/16	2-3/4	11/16	2-1/2	2	3/16	27
AH250BAL	2-1/2"	2-1/2"-8	2-1/2	3-1/4	3-7/16	1-1/8	3	2-5/16	3/8	61
AH300BAL	3"	3"-8	2-9/16	3-15/16	4	1-1/8	3-5/8	2-15/16	3/8	82
AH350BAL	3-1/2"	3-1/2"-8	2-9/16	4-7/16	4-9/16	1-1/8	4-1/8	3-7/16	3/8	107
AH400BAL	4"	4"-8	2-9/16	4-15/16	5-1/8	1-1/8	4-11/16	3-7/8	3/8	119

*** "H" Dimension Indicates Maximum Panel Thickness Hub Will Accomodate.

Compliances:

Certified Made in the USA
 UL 514B, 467
 NEC/CEC — Suitable for hazardous locations: Class I, Division 2;
 Class II, Divisions 1 and 2;
 Class III, per NEC 501.10(B)(4), 502.10(A)(1)(4), 502.10(B)(4), 503.10(A)(1)
 NEMA Standard FB
 Rated NEMA Types 2, 3, 3R, 3, 4X, 5, 12, 13
 Federal Standard A-A-50553
 Classified for Service Entrance
 CSA Standard: C22.2 No. 18F
 RoHS and REACH Compliant
 Prop.65 CA Compliant
 UNSPSC 39121311



Available OPTIONS:

* Materials: Steel Construction
 Select Sizes in Stainless Steel T316

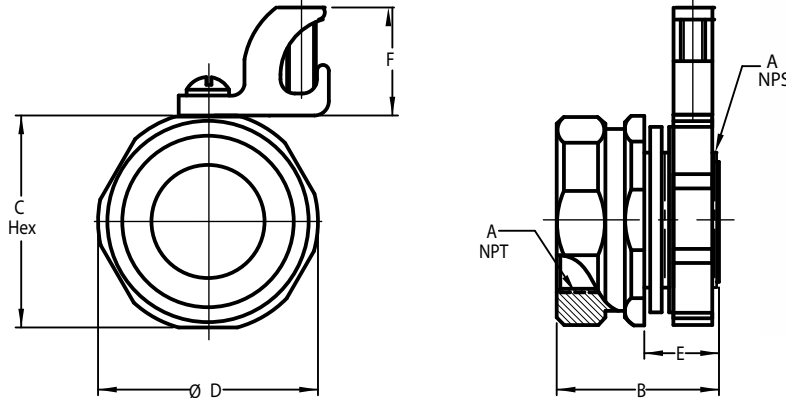
Grounding Options (See Individual Catalog Pages)
 Ground Screw, Bonding Strap, or Ground Lugs

Copper Lugs and Aluminum Ground Lugs with Various Size Wire Capacity Options Available

Ground Hubs Aluminum WT - GL

Size Range: 1/2" - 4"
Product Series: AH Threaded Ground Hub Water Tight with Factory Installed Aluminum Ground Lug **
Material: Aluminum (Copper Free) *
Sealing Ring: HPDE Chemical Resistant Polyethylene
Insulated Throat Bushing: UL Listed Rated 150° c
Made in the USA

Solid Aluminum (Cu Free) Bar Stock Construction
 Precision Cut Machined Threads
 Low Profile Design - More Wiring Space and Conduit Space
 Flat Hex Surface for Full Torque Values



Industrial SPEC-grade

AMFICO AH Series Ground Hubs connect Rigid/IMC conduit to an enclosure, offering supply-side equipment bonding and grounding with a lay-in-lug. The combination of an insulated threaded hub and grounding locknut provides a reliable ground fault path for service entrance equipment, eliminating the need to install an additional grounding bushing.

AMFICO's Hubs meet the requirements of NEC Article 250.92 for Bonding of Equipment for Services and NEC 250.97

Guaranteed Water Tight



Twice the Strength & Durability of ALL Cast Aluminum Products

Cat #	Trade Size	A Threads (fNPT - mNPS)	B	C (Hex)	D	E	F	Wt. Per/C	Standard Lug Wire Capacities	
									Trade Size	AWG
AH 50BGL AL	1/2"	1/2" - 14	1-3/16	1-1/8	1-1/4	9/16	3/4	6	1/2"	#14-#4
AH 75BGL AL	3/4"	3/4" - 14	1-3/16	1-3/8	1-1/2	9/16	3/4	8	3/4"	#14-#4
AH100BGL AL	1"	1" - 11.5	1-1/2	1-5/8	1-13/16	11/16	3/4	14	1"	#14-#4
AH125BGL AL	1-1/4"	1-1/4" - 11.5	1-1/2	2-1/8	2-1/4	11/16	3/4	19	1 1/4"	#14-#4
AH150BGL AL	1-1/2"	1-1/2" - 11.5	1-1/2	2-1/4	2-3/8	11/16	3/4	20	1 1/2"	#14-#4
AH200BGL AL	2"	2" - 11.5	1-1/2	2-13/16	2-7/8	11/16	3/4	27	2"	#14-#4
AH250BGL AL	2-1/2"	2-1/2" - 8	2-1/2	3-1/4	3-7/16	1-1/8	3/4	61	2 1/2"	#8-2/0
AH300BGL AL	3"	3" - 8	2-9/16	3-15/16	4	1-1/8	3/4	82	3"	#8-2/0
AH350BGL AL	3-1/2"	3-1/2" - 8	2-9/16	4-7/16	4-9/16	1-1/8	3/4	107	3 1/2"	#8-2/0
AH400BGL AL	4"	4" - 8	2-9/16	4-15/16	5-1/8	1-1/8	3/4	119	4"	#8-2/0

Maximum Panel Thickness with locknut secured - 1/2" to 3/4" = 3/32" 1" to 2" - 3/16" 2 1/2" to 4" = 3/8"

*** Larger Wire Capacities Avail. Consult Factory

Compliances:

Certified Made in the USA
 UL 514B, 467
 NEC/CEC — Suitable for hazardous locations: Class I, Division 2;
 Class II, Divisions 1 and 2;
 Class III, per NEC 501.10(B)(4), 502.10(A)(1)(4), 502.10(B)(4), 503.10(A)(1)
 NEMA Standard FB
 Rated NEMA Types 2, 3, 3R, 3, 4X, 5, 12, 13
 Federal Standard A-A-50553
 Classified for Service Entrance
 CSA Standard: C22.2 No. 18F
 RoHS and REACH Compliant
 Prop.65 CA Compliant
 UNSPSC 39121311



Available OPTIONS:

* Materials: Steel Construction
 Select Sizes in Stainless Steel T316

Ground Strap or Ground Screw

** Various Size Wire Capacity Options Available up to 250mcm

Ground Lugs are Manufactured from High Strength 6061-T6 Aluminum, and are Ideally Suited for Grounding and Bonding Applications Accommodating Both Copper and Aluminum Conductor Sizes #14 AWG to 250 KCMIL, UL486B Listed, AL9CU Rated, for Copper and Aluminum Conductor Combinations Up To 90° C, 600 V

Ground Hubs Steel Water Tight - GL

Size Range: 1/2" - 4"

Product Series: AHGS Threaded Ground Hub Water Tight with Factory Installed Aluminum Ground Lay-In Lug ***

Material: Solid Alloy Steel Construction *

Zinc Plated, Chromate Finish**

Sealing Ring: HPDE Chemical Resistant Polyethylene

Insulated Throat Bushing: UL Listed Rated 150° c

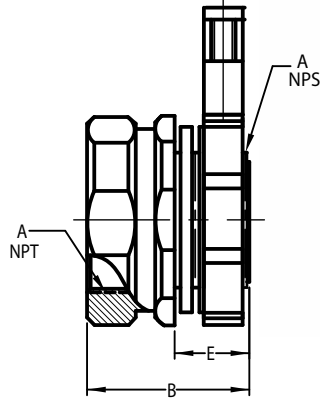
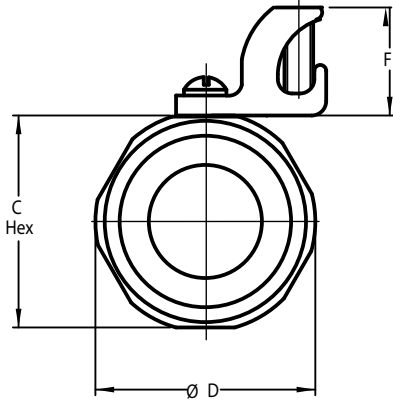
Made in the USA

Solid Steel Construction

Precision Cut Machined Threads

Low Profile Design - More Wiring Space and Conduit Space

Flat Hex Surface for Full Torque Values



Industrial SPEC-grade

AMFICO AH Series Ground Hubs connect Rigid/IMC conduit to an enclosure, offering supply-side equipment bonding and grounding with a lay-in-lug. The combination of an insulated threaded hub and grounding locknut provides a reliable fault path for service entrance equipment, eliminating the need to install an additional grounding bushing.

AMFICO's Hubs meet the requirements of NEC Article 250.92 for Bonding of Equipment for Services and NEC 250.97

Guaranteed Water Tight

Factory Installed Ground Lug



Twice the Strength & Durability of ALL Zinc Cast and Malleable Products

Cat #	Trade Size	A Threads (fNPT - mNPS)	B	C (Hex)	D	E	F	Wt. Per/C	Standard Lug Wire Capacities	
									Trade Size	AWG
AH 50BGL	1/2"	1/2" - 14	1-3/16	1-1/8	1-1/4	9/16	3/4	8	1/2"	#14-#4
AH 75BGL	3/4"	3/4" - 14	1-3/16	1-3/8	1-1/2	9/16	3/4	10	3/4"	#14-#4
AH100BGL	1"	1" - 11.5	1-1/2	1-5/8	1-13/16	11/16	3/4	16	1"	#14-#4
AH125BGL	1-1/4"	1-1/4" - 11.5	1-1/2	2-1/8	2-1/4	11/16	3/4	21	1 1/4"	#14-#4
AH150BGL	1-1/2"	1-1/2" - 11.5	1-1/2	2-1/4	2-3/8	11/16	3/4	22	1 1/2"	#14-#4
AH200BGL	2"	2" - 11.5	1-1/2	2-13/16	2-7/8	11/16	3/4	30	2"	#14-#4
AH250BGL	2-1/2"	2-1/2" - 8	2-1/2	3-1/4	3-7/16	1-1/8	3/4	69	2 1/2"	#8-2/0
AH300BGL	3"	3" - 8	2-9/16	3-15/16	4	1-1/8	3/4	88	3"	#8-2/0
AH350BGL	3-1/2"	3-1/2" - 8	2-9/16	4-7/16	4-9/16	1-1/8	3/4	114	3 1/2"	#8-2/0
AH400BGL	4"	4" - 8	2-9/16	4-15/16	5-1/8	1-1/8	3/4	127	4"	#8-2/0

Maximum Panel Thickness with locknut secured - 1/2" to 3/4" = 3/32" 1" to 2" - 3/16" 2 1/2" to 4" = 3/8"

*** Larger Wire Capacities Avail. Consult Factory Standard Lug is AL CU Lug Available

Compliances:

Certified Made in the USA

UL 514B, 467

NEC/CEC — Suitable for hazardous locations: Class I, Division 2; **

Class II, Divisions 1 and 2;

Class III, per NEC 501.10(B)(4), 502.10(A)(1)(4), 502.10(B)(4), 503.10(A)(1)

NEMA Standard FB

Rated NEMA Types 2, 3, 3R, 3, 4X, 5, 12, 13

Federal Standard A-A-50553

Classified for Service Entrance

CSA Standard: C22.2 No. 18F

RoHS and REACH Compliant

Prop.65 CA Compliant

UNSPSC 39121311



File # E258495

Available OPTIONS:

* Materials: Aluminum Copper Free and

Select Sizes in Stainless Steel T316

Galvanized Plating Option

Add Suffix "G" to cat # i.e. AH50BG - minimum qty's may apply

Other Grounding Options (See Individual Catalog Pages)

Ground Strap or Ground Screw

*** Copper Lugs and Aluminum Ground Lugs with

Various Size Wire Capacity Options Available up to 250mcm

Ground Lugs are Manufactured from High Strength 6061-T6 Aluminum, and are Ideally Suited for Grounding and Bonding Applications

Accommodating Both Copper and Aluminum Conductor Sizes #14 AWG to 250 KCMIL, UL486B Listed, AL9CU Rated, for Copper and Aluminum Conductor Combinations Up To 90 DEG C, 600 V



Ground Hubs Steel Water Tight -GS

Size Range: 1/2" - 4"

Product Series: AHGS Threaded Ground Hub Water Tight with Grounding Strap

Material: Solid Alloy Steel Construction *

Zinc Plated, Chromate Finish**

Sealing Ring: HPDE Chemical Resistant Polyethylene

Insulated Throat Bushing: UL Listed Rated 150° c

Made in the USA

Solid Steel Construction

Precision Cut Machined Threads

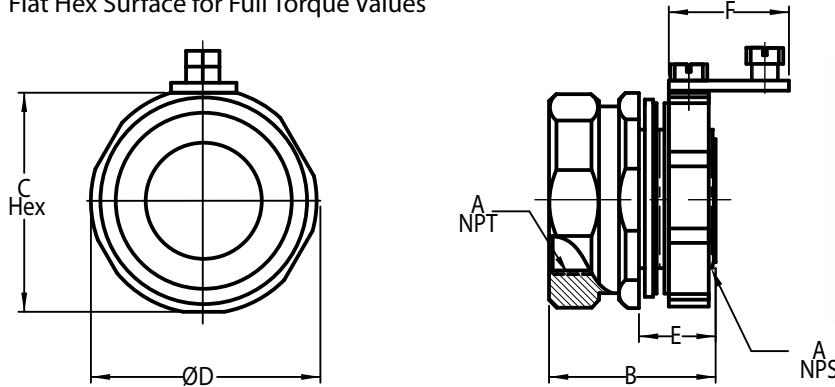
Low Profile Design - More Wiring Space and Conduit Space

Flat Hex Surface for Full Torque Values

Industrial SPEC-grade

AMFICO AH Series Ground Hubs connect Rigid/IMC conduit to an enclosure, offering supply-side equipment bonding and grounding with various options. The combination of an insulated threaded hub and grounding locknut provides a reliable ground fault path for service entrance equipment, eliminating the need to install an additional grounding bushing.

AMFICO's Hubs meet the requirements of NEC Article 250.92 for Bonding of Equipment for Services and NEC 250.97



Guaranteed Water Tight



Twice the Strength & Durability of ALL Cast and Malleable Iron Products

Cat #	Trade Size	A Threads (fNPT - m NPS)	B	C (Hex)	D	E	F	Wt. Per/C	Maximum CU Ground Wire Size
AH 50BGS	1/2"	1/2" - 14	1-3/16	1-1/8	1-1/4	9/16	13/16	18	1/2" - 2" #8 2-1/2" - 3-1/2" #6 4" #4
AH 75BGS	3/4"	3/4" - 14	1-3/16	1-3/8	1-1/2	9/16	13/16	23	
AH100BGS	1"	1" - 11.5	1-1/2	1-5/8	1-13/16	11/16	13/16	40	
AH125BGS	1-1/4"	1-1/4" - 11.5	1-1/2	2-1/8	2-1/4	11/16	13/16	51	
AH150BGS	1-1/2"	1-1/2" - 11.5	1-1/2	2-1/4	2-3/8	11/16	13/16	53	
AH200BGS	2"	2" - 11.5	1-1/2	2-13/16	2-7/8	11/16	13/16	69	
AH250BGS	2-1/2"	2-1/2" - 8	2-1/2	3-1/4	3-7/16	1-1/8	13/16	177	
AH300BGS	3"	3" - 8	2-9/16	3-15/16	4	1-1/8	13/16	233	
AH350BGS	3-1/2"	3-1/2" - 8	2-9/16	4-7/16	4-9/16	1-1/8	13/16	289	
AH400BGS	4"	4" - 8	2-9/16	4-15/16	5-1/8	1-1/8	13/16	340	

Maximum Panel Thickness with locknut secured - 1/2" to 3/4" = 3/32" 1" to 2" - 3/16" 2 1/2" to 4" = 3/8"

Compliances:

Certified Made in the USA

UL 514B, 467

NEC/CEC — Suitable for hazardous locations: Class I, Division 2;

Class II, Divisions 1 and 2;

Class III, per NEC 501.10(B)(4), 502.10(A)(1)(4), 502.10(B)(4), 503.10(A)(1)

NEMA Standard FB

Rated NEMA Types 2, 3, 3R, 3, 4X, 5, 12, 13

Federal Standard A-A-50553

Classified for Service Entrance

CSA Standard: C22.2 No. 18F

RoHS and REACH Compliant

Prop.65 CA Compliant

UNSPSC 39121311



Available OPTIONS:

* Materials: Aluminum Copper Free and

Select Sizes in Stainless Steel T316

** Galvanized Plating Option

Add Suffix "G" to cat # i.e. AH50BG - minimum qty's may apply

Grounding Options (See Individual Catalog Pages) Ground Screw, or Ground Lugs

Copper Lugs and Aluminum Ground Lugs with Various Size Wire Capacity Options Available

Ground Hubs AL Water Tight -GS

Size Range: 1/2" - 4"

Product Series: AHGS Threaded Ground Hub Water Tight with Grounding Strap

Material: Aluminum (Copper Free) *

Sealing Ring: HPDE Chemical Resistant Polyethylene

Insulated Throat Bushing: UL Listed Rated 150° c

Made in the USA

Solid AL Bar Stock Construction

Precision Cut Machined Threads

Low Profile Design - More Wiring Space and Conduit Space

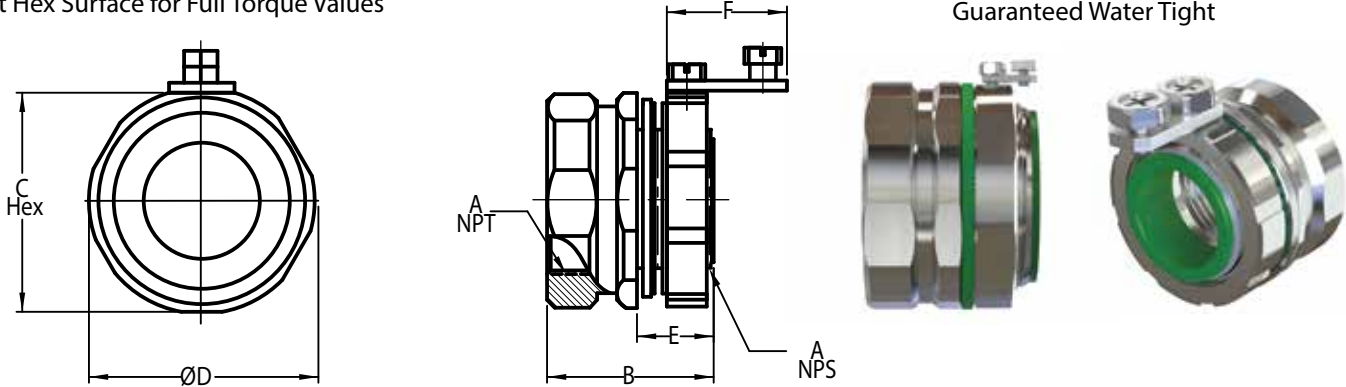
Flat Hex Surface for Full Torque Values

Industrial SPEC-grade

AMFICO AH Series Ground Hubs connect Rigid/IMC conduit to an enclosure, offering supply-side equipment bonding and grounding with various options. The combination of an insulated threaded hub and grounding locknut provides a reliable ground fault path for service entrance equipment, eliminating the need to install an additional grounding bushing.

AMFICO's Hubs meet the requirements of NEC Article 250.92 for Bonding of Equipment for Services and NEC 250.97

Guaranteed Water Tight



Cat #	Trade Size	A Threads (fNPT - mNPS)	B	C (Hex)	D	E	F	Wt. Per/C	Maximum CU Ground Wire Size
AH 50BGSAL	1/2"	1/2" - 14	1-3/16	1-1/8	1-1/4	9/16	13/16	6	1/2" - 2" #8
AH 75BGSAL	3/4"	3/4" - 14	1-3/16	1-3/8	1-1/2	9/16	13/16	8	2-1/2" - 3 1/2" #6
AH100BGSAL	1"	1" - 11.5	1-1/2	1-5/8	1-13/16	11/16	13/16	14	4" #4
AH125BGSAL	1-1/4"	1-1/4" - 11.5	1-1/2	2-1/8	2-1/4	11/16	13/16	19	
AH150BGSAL	1-1/2"	1-1/2" - 11.5	1-1/2	2-1/4	2-3/8	11/16	13/16	20	
AH200BGSAL	2"	2" - 11.5	1-1/2	2-13/16	2-7/8	11/16	13/16	27	
AH250BGSAL	2-1/2"	2-1/2" - 8	2-1/2	3-1/4	3-7/16	1-1/8	13/16	61	
AH300BGSAL	3"	3" - 8	2-9/16	3-15/16	4	1-1/8	13/16	82	
AH350BGSAL	3-1/2"	3-1/2" - 8	2-9/16	4-7/16	4-9/16	1-1/8	13/16	107	
AH400BGSAL	4"	4" - 8	2-9/16	4-15/16	5-1/8	1-1/8	13/16	119	

Maximum Panel Thickness with locknut secured - 1/2" to 3/4" = 3/32" 1" to 2" - 3/16" 2 1/2" to 4" = 3/8"

Compliances:

Certified Made in the USA

UL 514B, 467

NEC/CEC — Suitable for hazardous locations: Class I, Division 2;

Class II, Divisions 1 and 2;

Class III, per NEC 501.10(B)(4), 502.10(A)(1)(4), 502.10(B)(4), 503.10(A)(1)

NEMA Standard FB

Rated NEMA Types 2, 3, 3R, 3, 4X, 5, 12, 13

Federal Standard A-A-50553

Classified for Service Entrance

CSA Standard: C22.2 No. 18F

RoHS and REACH Compliant

Prop.65 CA Compliant

UNSPSC 39121311



Available OPTIONS:

* Materials: Steel Construction

Select Sizes in Stainless Steel T316

With Aluminum Layin Ground Lug

Ground Hubs Steel Water Tight -BS

Size Range: 1/2" - 4"

Product Series: AHGS Threaded Ground Hub Water Tight with Single Bonding/Ground Screw

Material: Solid Alloy Steel Construction *

Zinc Plated, Chromate Finish**

Sealing Ring: HPDE Chemical Resistant Polyethylene

Insulated Throat Bushing: UL Listed Rated 150° c

Made in the USA

Solid Steel Construction

Precision Cut Machined Threads

Low Profile Design - More Wiring Space and Conduit Space

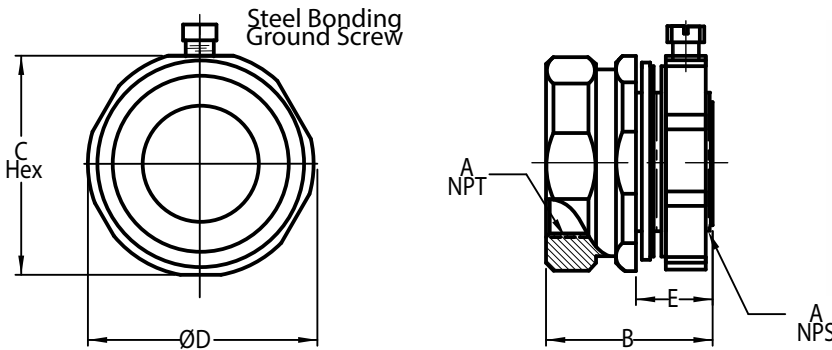
Flat Hex Surface for Full Torque Values

Industrial SPEC-grade

AMFICO AH Series Ground Hubs connect Rigid/IMC conduit to an enclosure, offering supply-side equipment bonding and grounding with various options. The combination of an insulated threaded hub and grounding locknut provides a reliable ground fault path for service entrance equipment, eliminating the need to install an additional grounding bushing.

AMFICO's Hubs meet the requirements of NEC Article 250.92 for Bonding of Equipment for Services and NEC 250.97

Guaranteed Water Tight



Twice the Strength & Durability of ALL Cast and Malleable Iron Products

Cat #	Trade Size	A Threads (fNPT - mNPS)	B	C (Hex)	Ø D	E	Wt. Per/C
AH 50BS	1/2"	1/2" - 14	1-3/16	1-1/8	1-1/4	9/16	18
AH 75BS	3/4"	3/4" - 14	1-3/16	1-3/8	1-1/2	9/16	23
AH100BS	1"	1" - 11.5	1-1/2	1-5/8	1-13/16	11/16	40
AH125BS	1-1/4"	1-1/4" - 11.5	1-1/2	2-1/8	2-1/4	11/16	51
AH150BS	1-1/2"	1-1/2" - 11.5	1-1/2	2-1/4	2-3/8	11/16	53
AH200BS	2"	2" - 11.5	1-1/2	2-13/16	2-7/8	11/16	69
AH250BS	2-1/2"	2-1/2" - 8	2-1/2	3-1/4	3-7/16	1-1/8	177
AH300BS	3"	3" - 8	2-9/16	3-15/16	4	1-1/8	233
AH350BS	3-1/2"	3-1/2" - 8	2-9/16	4-7/16	4-9/16	1-1/8	289
AH400BS	4"	4" - 8	2-9/16	4-15/16	5-1/8	1-1/8	340

Maximum Panel Thickness with locknut secured - 1/2" to 3/4" = 3/32" 1" to 2" - 3/16" 2 1/2" to 4" = 3/8"

Maximum Ground/Bonding Wire is # 6 AWG. Alternative item is ground strap or ground layin lug.

Compliances:

Certified Made in the USA

UL 514B, 467

NEC/CEC — Suitable for hazardous locations: Class I, Division 2;

Class II, Divisions 1 and 2;

Class III, per NEC 501.10(B)(4), 502.10(A)(1)(4), 502.10(B)(4), 503.10(A)(1)

NEMA Standard FB

Rated NEMA Types 2, 3, 3R, 3, 4X, 5, 12, 13

Federal Standard A-A-50553

Classified for Service Entrance

CSA Standard: C22.2 No. 18F

RoHS and REACH Compliant

Prop.65 CA Compliant

UNSPSC 39121311



File # E258495

Available OPTIONS:

* Materials: Aluminum Copper Free and

Select Sizes in Stainless Steel T316

** Galvanized Plating Option

Add Suffix "G" to cat # i.e. AH50BG -

minimum qty's may apply

Grounding Options (See Individual Catalog Pages)

GroundBonding Strap or Ground Lugs

Copper Lugs and Aluminum Ground Lugs with Various Size Wire Capacity Options Available