

## Adapter Steel EMT to LT Conduit

Size Range: 1/2" - 4"

Product Series: STREMT - EMT Compression to Liquid Tight Conduit

Material: Solid Alloy Steel Construction

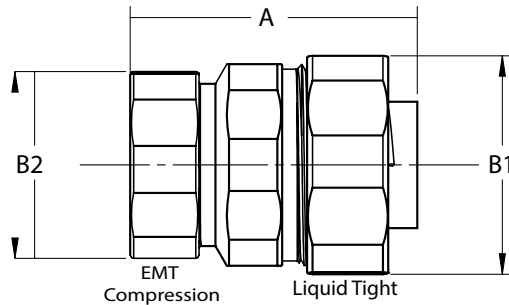
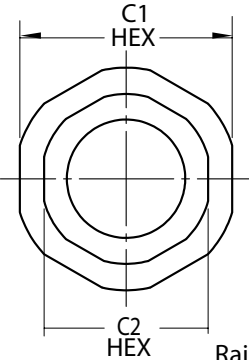
Zinc Plated with Chromate Finish \*\*

Made in the USA

Industrial SPEC-grade

TWICE the Strength and Durability of Die Cast & Malleable Iron Products

Split Coupling EMT Compression to Liquid Tight Conduit



Converts Flexible LT conduit to EMT Conduit  
Outdoor and Indoor Use with flexible metallic LT conduit or type B flexible non-metallic LT conduit.

Precision Machined from Solid Alloy Bar Stock  
Machined Cut Threads  
Full Compression EZ Torque Nuts

Long Ferrule on LT End Provides Continual Ground and Stability Against Pull Out

Rain Tight Option - RT Cat #'s

Cat #	Trade Size	A Length	B1 Diameter	B2 Diameter	C1 Hex	C2 Hex
STREMT 50	1/2"	1-9/16"	1-3/16"	1"	1-1/8"	15/16"
STREMT 75	3/4"	1-11/16"	1-7/16"	1-1/4"	1-3/8"	1-3/16"
STREMT100	1"	1-13/16"	1-3/4"	1-1/2"	1-11/16"	1-7/16"
STREMT125	1-1/4"	2-3/4"	2-3/16"	1-7/8"	2-1/16"	1-13/16"
STREMT150	1-1/2"	3-3/16"	2-3/8"	2-3/16"	2-5/16"	2-1/16"
STREMT200	2"	3-3/8"	2-7/8"	2-7/8"	2-3/4"	2-9/16"
STREMT250	2-1/2"	4-11/16"	3-7/16"	3-3/8"	3-5/16"	3-5/16"
STREMT300	3"	4-7/8"	4"	4"	3-15/16"	3-15/16"
STREMT350	3-1/2"	6-1/8"	4-9/16"	4-9/16"	4-7/16"	4-7/16"
STREMT400	4"	6-3/8"	5-1/8"	5-1/8"	5"	4-15/16"
STREMT 50RT	1/2"	1-9/16"	1-3/16"	1"	1-1/8"	15/16"
STREMT 75RT	3/4"	1-11/16"	1-7/16"	1-1/4"	1-3/8"	1-3/16"
STREMT100RT	1"	1-13/16"	1-3/4"	1-1/2"	1-11/16"	1-7/16"
STREMT125RT	1-1/4"	2-3/4"	2-3/16"	1-7/8"	2-1/16"	1-13/16"
STREMT150RT	1-1/2"	3-3/16"	2-3/8"	2-3/16"	2-5/16"	2-1/16"
STREMT200RT	2"	3-3/8"	2-7/8"	2-7/8"	2-3/4"	2-9/16"
STREMT250RT	2-1/2"	4-11/16"	3-7/16"	3-3/8"	3-5/16"	3-5/16"
STREMT300RT	3"	4-7/8"	4"	4"	3-15/16"	3-15/16"
STREMT350RT	3-1/2"	6-1/8"	4-9/16"	4-9/16"	4-7/16"	4-7/16"
STREMT400RT	4"	6-3/8"	5-1/8"	5-1/8"	5"	4-15/16"

**Compliances:**

Certified Made in the USA

UL 514B, 467

Compression Fittings Concrete Tight

Suitable for Direct Burial \*\*\*

NEMA Standard FB1

Federal Standard A-A-50553

Certified for MIL-STD 810 Sinusoidal Vibrations

CSA Standard: C22.2 No. 18F

RoHS Compliant

REACH Compliant

CA Prop 65 Compliant

UNSPSC 39131707



**Available OPTIONS:**

\*\* Galvanized Plating - Option

For this Option, Add Suffix "G" to Above Cat Number

\*\*\* Rain Tight RT Series Recommended for

Direct Burial Requirements

**Also Offered As:**

LT to Rigid Conduit - Compression

LT to Rigid Conduit - Threaded

LT to FMC - FLX