

# AMFICO Erickson 3 Piece Coupling 1/2" - 2" Alloy Steel , Zinc or Galvanized Plated

**ER Series  
Industrial SPECgrade**

**ER Series Industrial SPEC-grade Alloy Steel 3 Piece Erickson Coupling**  
 Manufactured in the USA  
 For Use with Rigid/IMC Conduit Hub

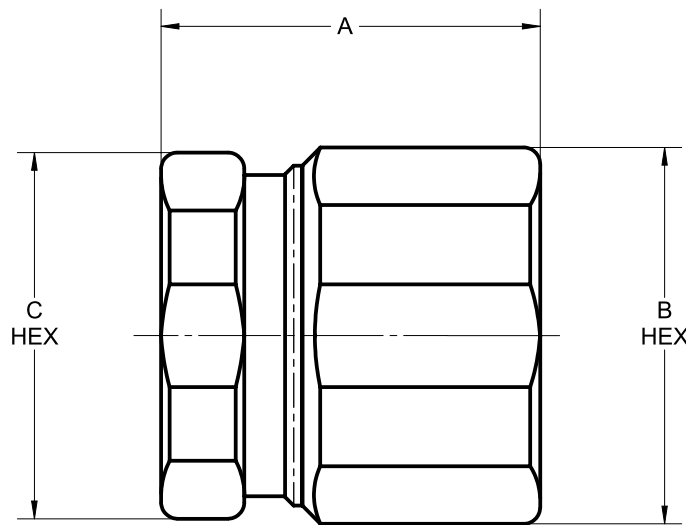
**Application:**

To couple and effectively bond threaded ends of rigid metal conduit/intermediate conduit where neither length of conduit can be rotated.

All coupling are suitable for concrete-tight applications. 1/2" & 3/4" couplings are rain tight.

Alloy Steel Construction furnished as zinc plated or galvanized.

Add suffix "G" to cat numbers below for galvanized fittings.



CAT.#	TRADE SIZE	A	B (HEX)	C (HEX)
ER50	1/2"	1-1/16	1-1/8	1-1/32
ER75	3/4"	1-3/32	1-11/32	1-13/64
ER100	1"	1-3/8	1-5/8	1-9/16
ER125	1-1/4"	1-11/16	2-1/32	1-61/64
ER150	1-1/2"	1-3/4	2-9/32	2-3/16
ER200	2"	1-7/8	2-25/32	2-21/32

Add suffix "G" to cat # for galvanized fittings (example "ER50G").

**INDUSTRIAL  
SPEC-grade**



E93605

UL 514B

NEMA Standard FB1

Federal Standard A-A-50553

Certified Made in the USA



LR61799

