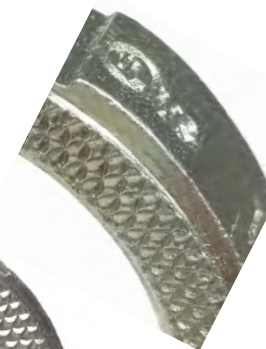


The NEXT Generation of Hubs



Available
With & Without Grounding Screw
or optional Ground Lug

Revolutionary Design



Fully Machined Knurled Surface -
Bites Into Enclosure for
Positive Grounding

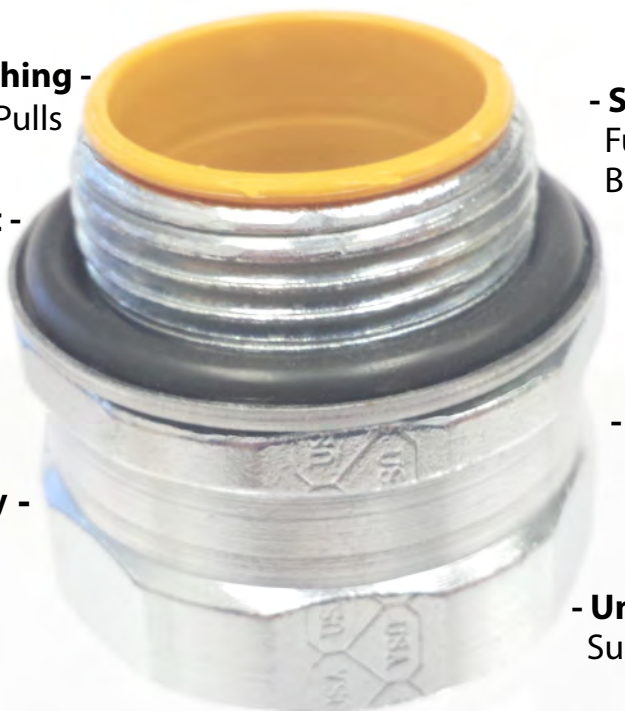
**Full Surface Hex Edges with
Designed Notches to Lock to Body -**
Provides EZ Torque with Positive Lock



Industrial Grade Locked Bushing -
Insulated Throat for Fast Wire Pulls

Captive Vi Tron O Ring Gasket -
Excellent Resistance to Heat,
Engine Oils and Lubricants,
Ozone and UV Weathering.

Fully Machined Solid Steel Body -
Provides Smooth Transition
Without Sharp Edges



Made in the USA

- Solid Steel Threads
Fully Machined NPS Threads, Prevents Cross-Threading
Body & Nut Lock Tight & Right

Standard Trade Size Fits Standard Knockouts

NEMA 2, 3, 3R, 4, 4X 

- Full Industrial Grade Zinc Plating
Provides Full Material Protection

- Unique AMFICO EZ Torque Hex Body
Surface is Flat & Large to Accept Full Wrenching



Since 1946