



Made in the USA Since 1946

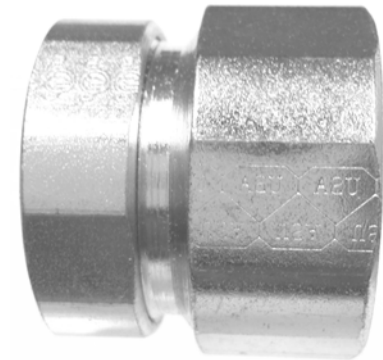
**SPEC-grade**

## ETR Series

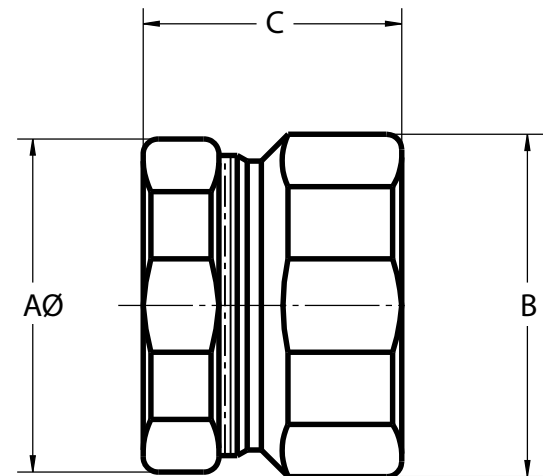
### Combination Compression Coupling Transitions EMT to Rigid Conduit Standard or RainTight

Size Range 1/2" to 2"

Material: Steel, Zinc Plated



Featuring:  
**EZ-Torque Compression Nut**



Cat #	Trade Size	Type	A Ø	B	C
ETR50	1/2"	STANDARD	.97	.97	1.24
ETR50RT	1/2"	RAINTIGHT	.97	.97	1.24
ETR75	3/4"	STANDARD	1.22	1.33	1.28
ETR75RT	3/4"	RAINTIGHT	1.22	1.33	1.28
ETR100	1"	STANDARD	1.49	1.56	1.45
ETR100RT	1"	RAINTIGHT	1.49	1.56	1.45
ETR125	1-1/4"	STANDARD	1.88	1.89	1.56
ETR125RT	1-1/4"	RAINTIGHT	1.88	1.89	1.56
ETR150	1-1/2"	STANDARD	2.14	2.15	1.78
ETR150RT	1-1/2"	RAINTIGHT	2.14	2.15	1.78
ETR200	2"	STANDARD	2.69	2.15	1.78
ETR200RT	2"	RAINTIGHT	2.69	2.67	1.88

ETR-Combo 092014.1